



FreshWater®
Salt System
Included



100% Filtration
SilentFlo Circulation



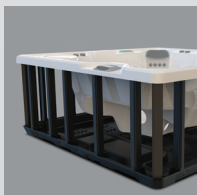
Moto-Massage® DX



Super Energy
Efficient



Color LCD
Touchscreen



Polymer Substructure
& Base Pan

HIGHLIFE® COLLECTION

PRODIGY®



*Shown with Alpine White Shell
and Java Cabinet*

People
5 Seats

Seating
Open

Jets
28 Jets

Voltage
230 V

Size

7' x 6'6" x 33" | 213 cm x 198 cm x 84 cm

Water Care

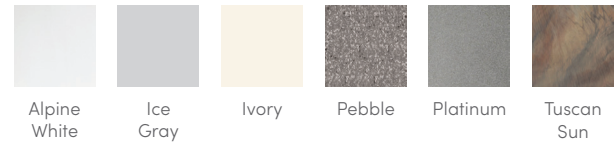
FreshWater® Salt System Included

HIGHLIFE® COLLECTION

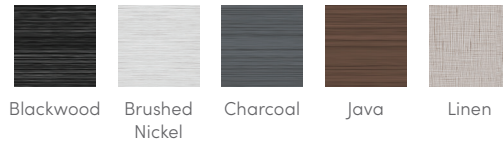
PRODIGY®



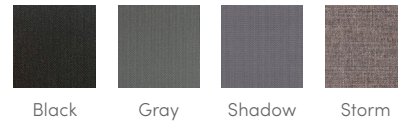
SHELL COLORS



CABINET COLORS



COVER COLORS



CABINET AND SHELL COLOR OPTIONS*

Cabinet Colors	Java	Charcoal	Blackwood	Linen	Brushed Nickel
Shell Colors	Alpine White Ice Gray Ivory Tuscan Sun Pebble	Alpine White Ice Gray Platinum Tuscan Sun Pebble	Alpine White Ice Gray Platinum	Alpine White Ivory Tuscan Sun Pebble	Alpine White Ice Gray Platinum

LEGENDARY MESSAGE

28 Personalized-Control Jets

- 1 Moto-Massage® DX (2)
- 2 SoothingStream®
- 1 JetStream®
- 2 Rotary Hydromassage
- 1 Directional Hydromassage
- 4 HydroStream®
- 16 Directional Precision®

EASY WATER CARE

Water Care System	FreshWater® IQ System Salt System Included Smart Monitoring System Optional
Filtration System	100% No-bypass Filtration Exclusive, High-flow Tri-X® Filters 195 sq. ft. Filtration Area

LEADING ENERGY EFFICIENCY

Jet Pump	Wavemaster® 9200; Two-speed, 2.5 HP Continuous Duty, 5.2 HP Breakdown Torque
Circulation Pump	SilentFlo® 5000 Quiet Continuous Filtration
Heater	No-Fault® 6,000 W / 230 V
Insulation	Multiple Layers of Foam Insulation; Certified to California Energy Commission (CEC) and APSP 14 energy efficiency standards for portable spas
Cover	WeatherPro™ 4" Tapered Custom-Fit with Hinge Seal

SIZE

Dimensions	7' x 6'6" x 33" / 213 cm x 198 cm x 84 cm
-------------------	---

CAPACITY

Seating Capacity	5 seats
Water Capacity	270 gallons / 1,025 liters
Weight	575 lbs. / 260 kg dry; 3,705 lbs. / 1,685 kg filled**

ADDITIONAL FEATURES

Smart Spa Technology*	Hot Spring Spas App Powered by the Connected Spa Kit
Water Feature	BellaFontana® with 3 illuminated arcs of water
Cover Lifters*	CoverCradle®, CoverCradle II, Lift 'n Glide®, or UpRite® (F/B only)
Steps*	Highlife Collection Steps (Blackwood, Charcoal, Java, Linen)
Entertainment*	Bluetooth® Wireless Sound System
Control System	IQ 2020® with Color LCD Touchscreen 230 V / 50 amp, 60 Hz (Includes GFCI protected sub-panel)
Lighting System	Luminescence® multi-color four-zone

*Optional Accessories

*No special orders or shell substitutions available. Actual colors and products may vary from print representation. See dealer to verify.

**Includes water and 5 adults weighing 175 lbs. each.